



spark
Italian inSight

AI VMS Server

64~256 Channel Monitoring

From Large-Scale to Ultra-Scale Applications

AI VMS Server integrates high-efficiency AI chips, advanced VMS technology, and scalable rackmount hardware supporting 64 to 256 chs delivering end-to-end solutions for mid-scale deployments to ultra-scale, high-density recording, ideal for airports, factories, schools, retail, offices, and smart cities.

X86 Server

- ▶ 64~256 channel Recording
- ▶ 12-bay Hard Drive
- ▶ Supports ONVIF/RTSP Video Input
- ▶ Supports Master/Slave
- ▶ Third-party Integration



Argo AI VMS

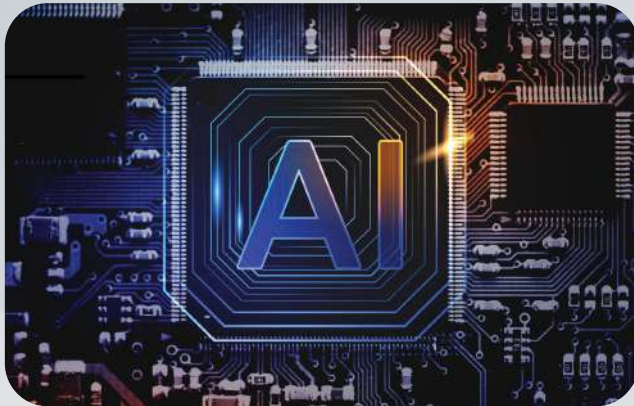
- ▶ AI Detection: Human, Vehicle, Smoke, Flame and Cross-line
- ▶ Local/Remote IP Configuration
- ▶ Dashboard
- ▶ Health Doctor
- ▶ LINE/Email Notifications
- ▶ E-Map





spark
Italian inSight

Features



High-efficiency AI chip

Argo is a highly efficient surveillance system software, ensuring high-quality service. Our system adopts Kneron's AI chip, enabling precise and efficient detection.



AI Video Analysis Management

Argo processes image data in real-time, identifying human, vehicle, flame and smoke, while supporting behavior detection like intrusion and loitering for enhanced monitoring efficiency.



Upgrade Analog to AI

Over 60% of cameras in the market are still analog. With this device, existing cameras can be easily upgraded to AI functionality without replacement.



Real-time Notification

Supports real-time notifications via email and communication apps (e.g. LINE), enabling managers to stay updated on events and take quick action to mitigate risks.

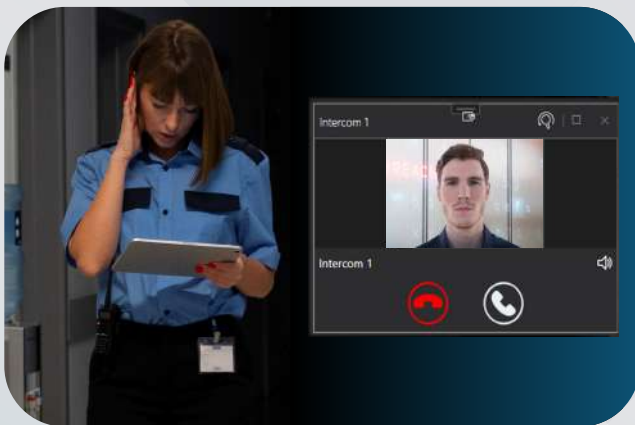


Features



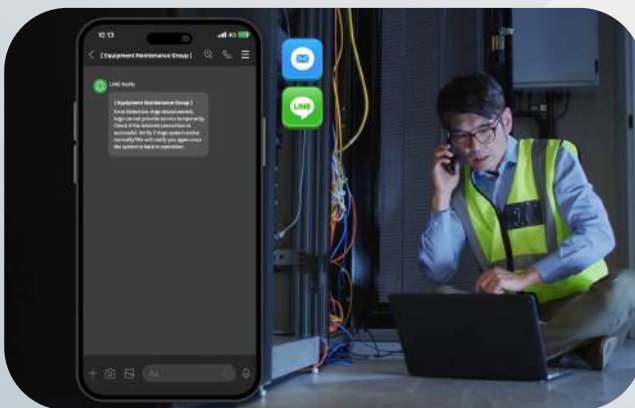
Customized Dashboard

Argo offers customizable dashboard design features, including layout configurations and charts (pie, line and bar), making it easy for users to view all statistics.



Two-way Intercom

Supports two-way audio, SIP intercom and remote video calls, with all communications recorded.



Health Doctor

Upon detecting anomalies, Argo immediately alerts managers and provides troubleshooting guidance to minimize downtime and safeguard assets.



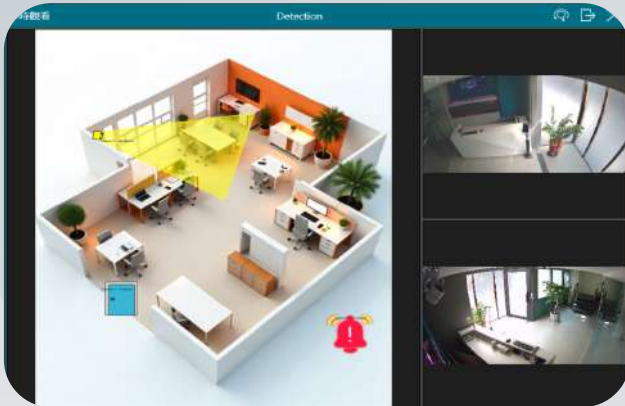
Remote Monitoring

Supports local and remote monitoring, allowing users to view and operate through different devices such as desktop, laptop, tablet and mobile.



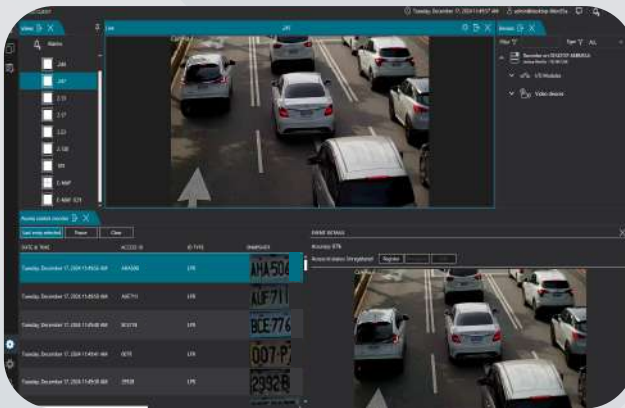
spark
Italian inSight

Features



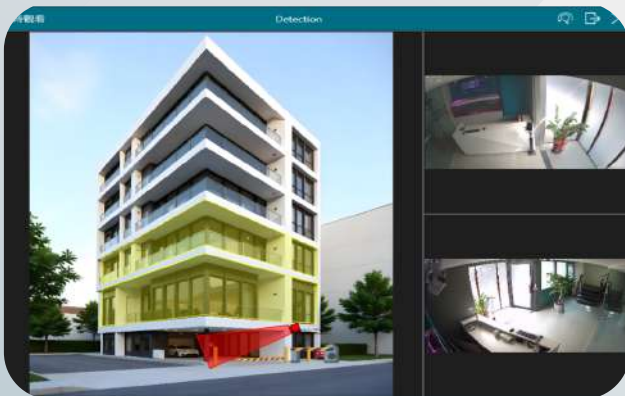
E-map

Supports importing Multi-level floor plan, making it easier to deploy monitoring devices. When an event occurs, alarms and real-time images will automatically activate to assist managers in responding quickly.



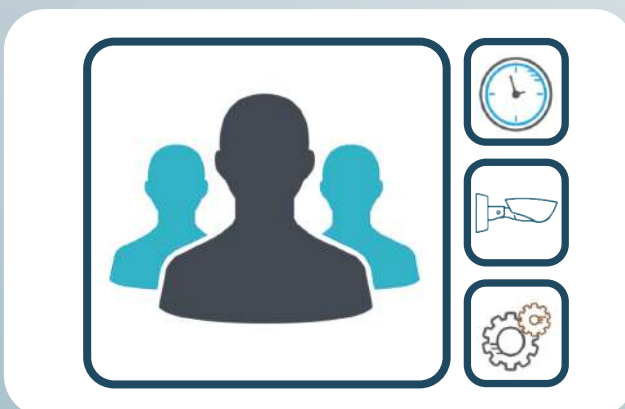
Multi-country ALPR

Supports license plate recognition in 80% of countries, identifying 4526 models and 194 brands, with real-time vehicle monitoring and access records.



Access Control

Supports Soyal access control devices for vehicle and personnel management, enabling remote control and real-time monitoring via an electronic map.



Advanced User Management

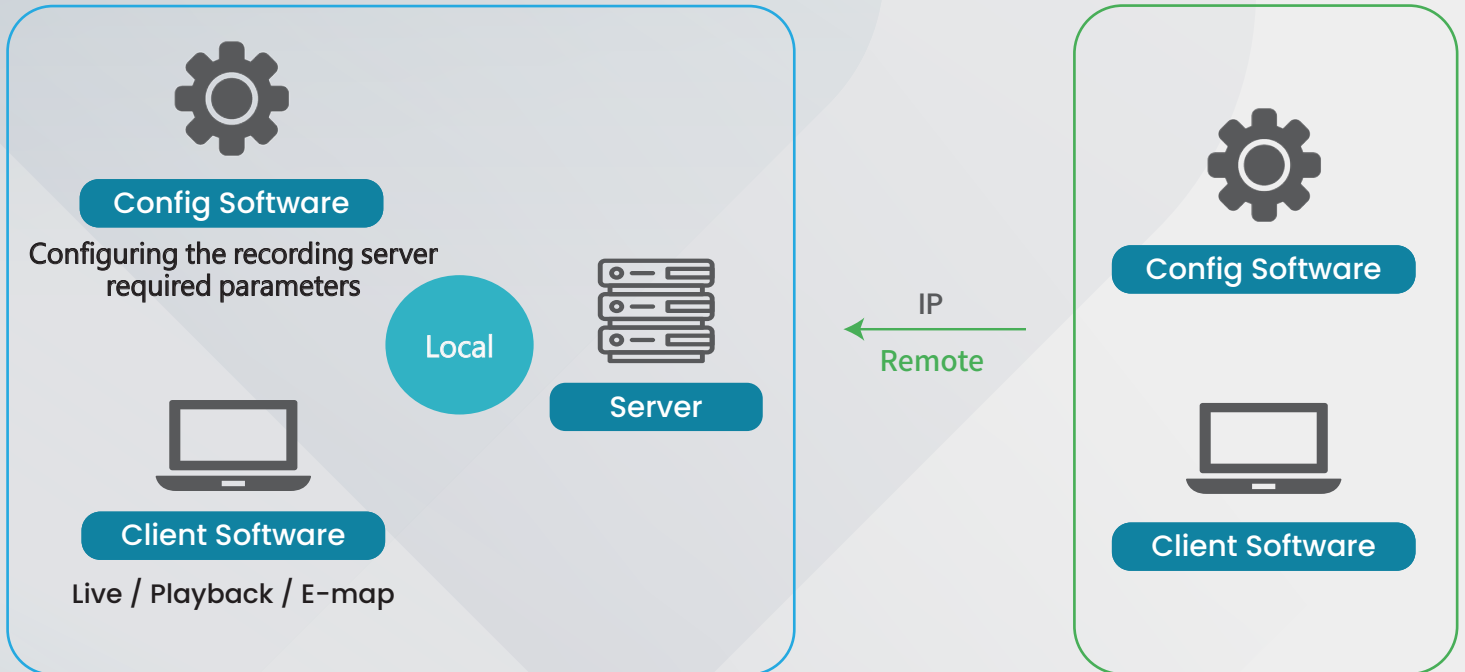
Administrators can adjust user permissions flexibly, saving settings to specific groups for quick application when adding new users, enhancing management efficiency.



System

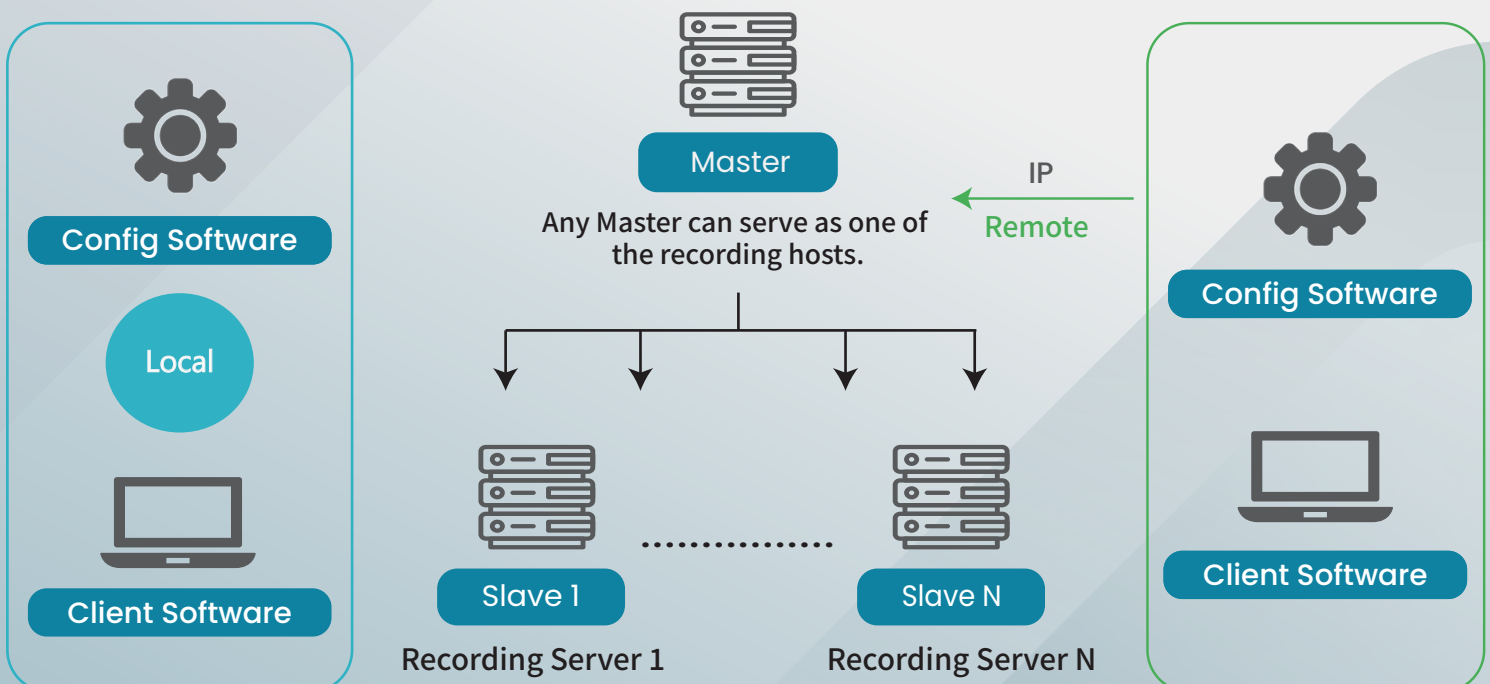
Standalone

Users can configure the required parameters locally or remotely.



Master/Slave

In addition to the Master server, users can easily add several servers as Slave servers. With this structure, users can monitor and manage multiple screens at the same time.

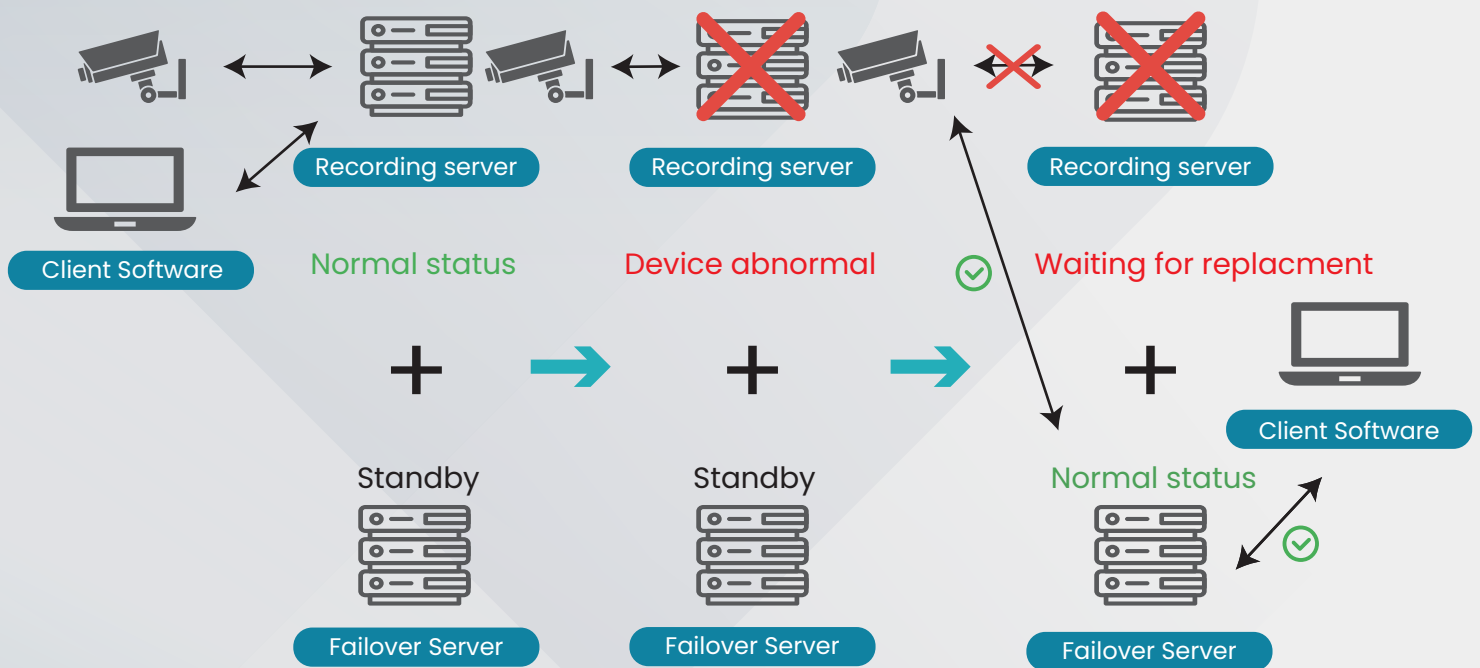




Failover

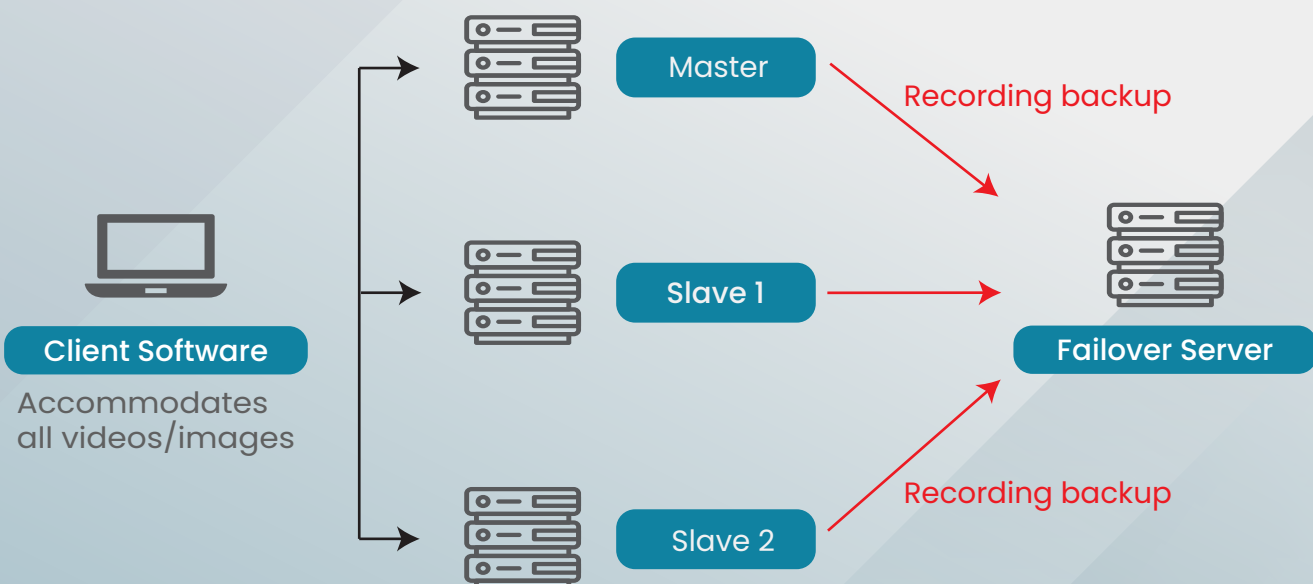
Standalone N+1

When the recording device malfunctions, the failover server will be activated and the recording function will not be interrupted.



Master/Slave N+1

When any recording server malfunctions, the backup recording will be activated.





Specification

Server

Model	SR-S-VMS-R2U12		SR-S-VMS-R3U16	
Processor	Intel® Core™ i5	Intel® Core™ i7	Intel® Core™ i7	Intel® Core™ i9
Memory (Smart Cache)	12MB	16MB	16MB	Max 36MB
Recording	64chs	128chs	128chs	256chs
Best For	Mid-scale	Large-scale	Large-scale	MUltral-scale

Display Interface	-DP/ HDMI -Dedicated Graphics Chip with 2GB Memory
Integrated Graphics	- UHD Graphics 630 - HDMI, DP, VGA
I/O port	-USB 3.2 ports ×4 1 PCI E 3.0 ×16 1 PCI E 3.0 ×8 1 PCI E 3.0 ×4 -M.2 Interface: Supports 2280/2242
Memory	-32GB ECC UDIMM, Dual channels(16GB x 2) -DDR4 3200 MHz, Maximum Support 12GB
Disk Array	Supports LSI RAID 0, 1, 5, 6, 10, 50, 60, JBOD
HDD	-Hotswappable. -Supports up to 12 2.5/3.5-inch SATA-III hard drives, maximum of 16TB each
Network	RJ-45 Gigabit Ethernet Ports ×2
Accessories	Rack-mount slides
Power Supply	800W 1+1 80 Plus Hot-swappable
Dimensions	670mm × 448mm × 88mm (D×W×H)
Certification	CE / FCC / BSMI
Operating Temp	0°C ~ 40°C

Remark: Server configuration based on processor and channel requirements.

Vision Management

Compatibility	Spark cameras, Omnieye cameras, 3rd party cameras	
Operating System	Win 11 IoT , Support for multi-monitor output	
Video Compression	H.265 , H.264 , MJPEG	
Audio Support	Two-way audio (Client)	
Liveview	-Liveview -32 channel views (64 chs recording) -Customizable layout -Multi-stream management	-Event pop-up -Manual snapshot and recording -PTZ control
Recording	-64~256 channel recording -Continuous/Scheduled recording -Event recording	-Edge recover -Event pre/post recording
Playback	-Customizable layout -Instant playback -Synchronized playback -Date and timeline visualization	-Event playback -Playback speed controls -Manual snapshot
Export	-Export multiple video with selectable time range -Snapshot and videos	-support MOV, MKV, MP4, AVI, Spark format -Support watermark
Certification	CA / DLAP	



Specification

AI Management

AI Video Analytics

- Human detection
- Vehicle detection
- Density detection
- Loitering detection
- Cross-line detection & counting

- Smoke detection*
- Fire detection*
- Multi-country license plate recognition*
- 190 countries
- 4526 models
- 194 brands
- 12 colors

Platform Management

Dashboard

- Heatmap
- Vehicle classification: car, motorbike, truck, bus,

- Counting (human, vehicle)
- Charts (pie, bar, horizontal, line)
- Exported (xlsx).

E-map

- Unlimited e-map layer
- Unlimited device to map
- View alarms on the map
- Event pop-up

- Rephase device position
- Rephase device angle
- Color-coded camera alarm status differentiation

Health Doctor

- AI function anomaly
- Disconnection anomaly (camera, network)
- Device anomaly (intercom, I/O module)

- Hardware anomaly (host, hard drive)
- CPU overload

Real-time Notifications

- E-mail

- LINE*
- Grouped, scheduled
- Customized with content.
- Image (Interval 1-300 secs)

Access Monitoring*

- Real-time display of license plate
- Access card number

Intercom Monitoring*

- SIP two-way intercom
- Video call
- Emergency call alert

Event & Alarm Management

Event Triggers

- Configurable based on device & schedule
- AND/OR trigger conditions
- Digital input
- Camera analytics
- AI analytics

- System related events
- User related events
- Device and network related events
- Third party events (LPR, eTag)

Event Actions

- Configurable alarm SOP
- Configurable alarm recipient
- Recording (support Pre/post recording up to 300 secs)
- Digital output

- Email & LINE* notification
- PTZ preset
- PTZ tour

Alarm Settings

- Configurable alarm workflow
- Alarm trigger scheduling

- Set alarm recipients

Alarm Reception

- Alarm management system
- Client alert sound

- Alarm record query database
- Pop-up alarm event view

System Management

User Privilege

- Configurable based on camera, function and schedule

Camera Management

- Support basic camera settings

Third-party Device Management*

- Supports 24GHz radar, which can be used in conjunction with cameras for perimeter protection.
- I/O module
- LPR Camera

- eTag, RFID reader
- LED display

Remark: Features marked with * are optional.